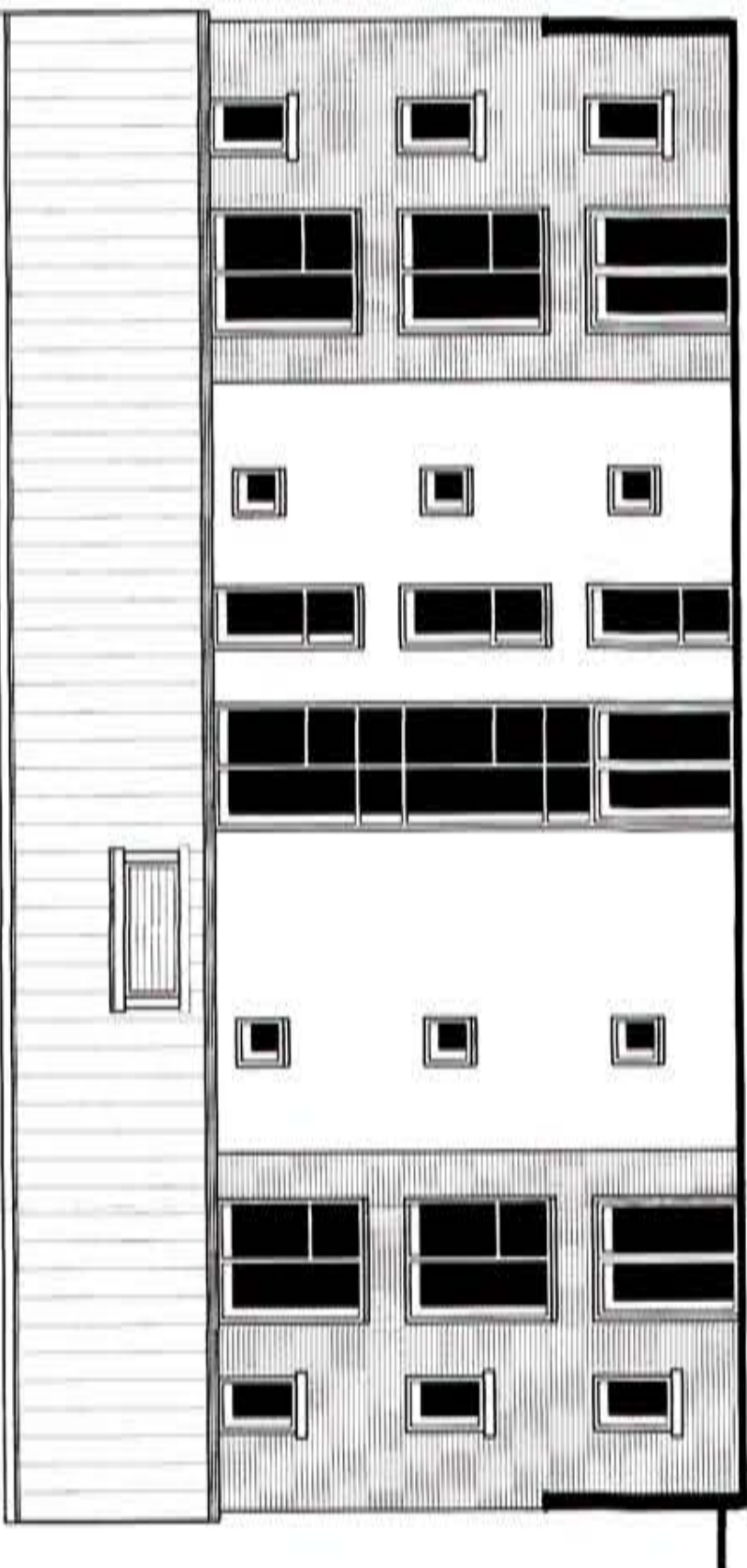
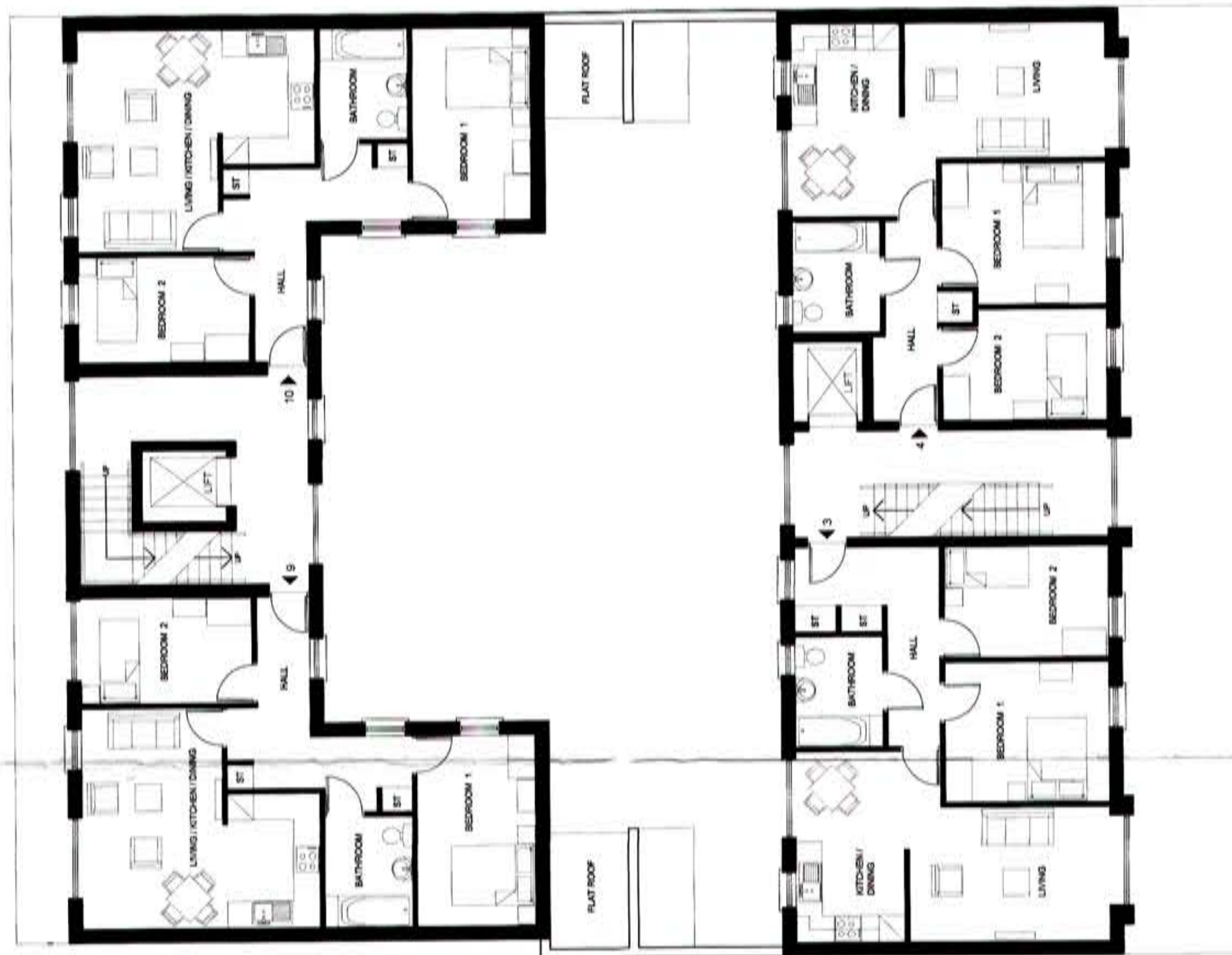


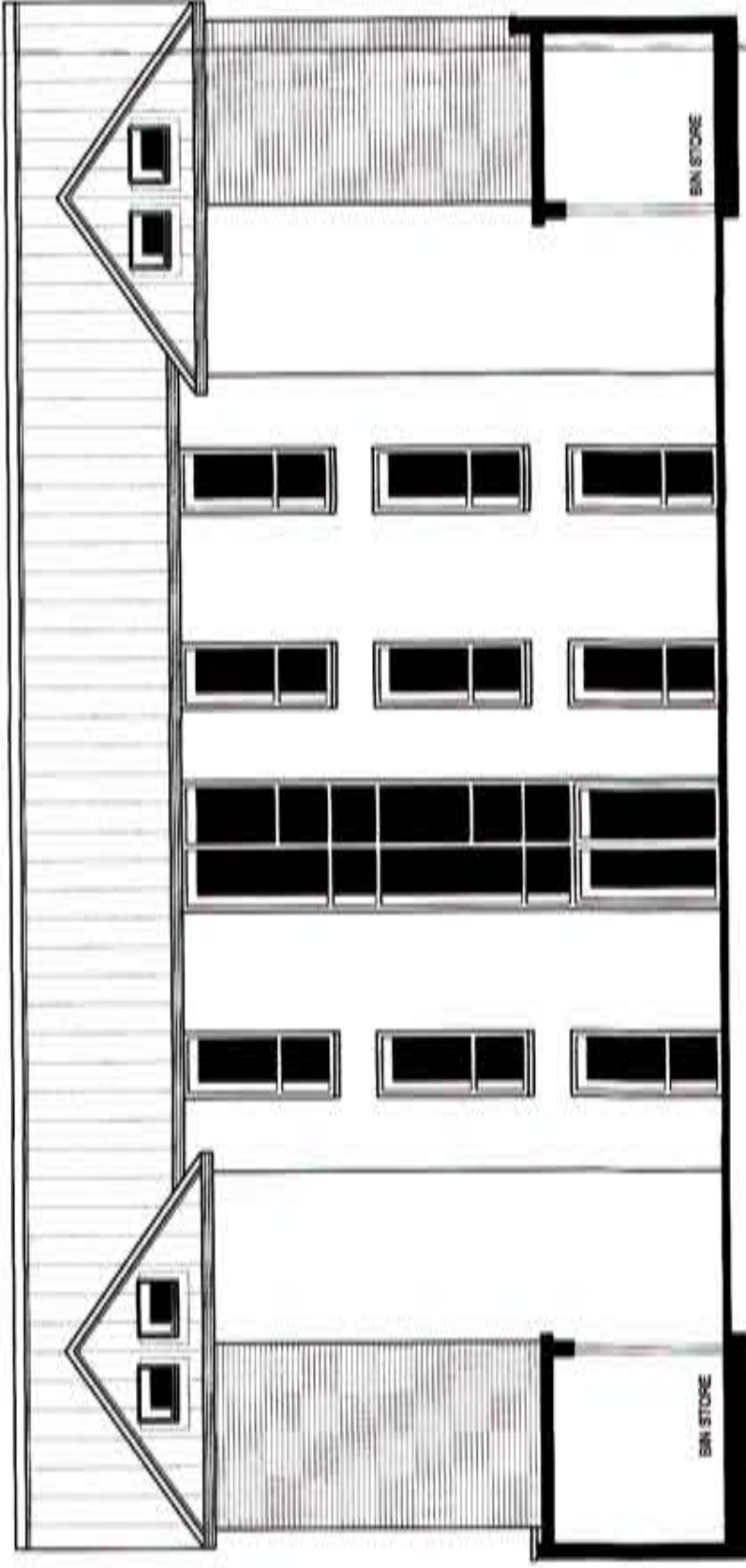
EAST FACING GABLE ELEVATION - 1:100



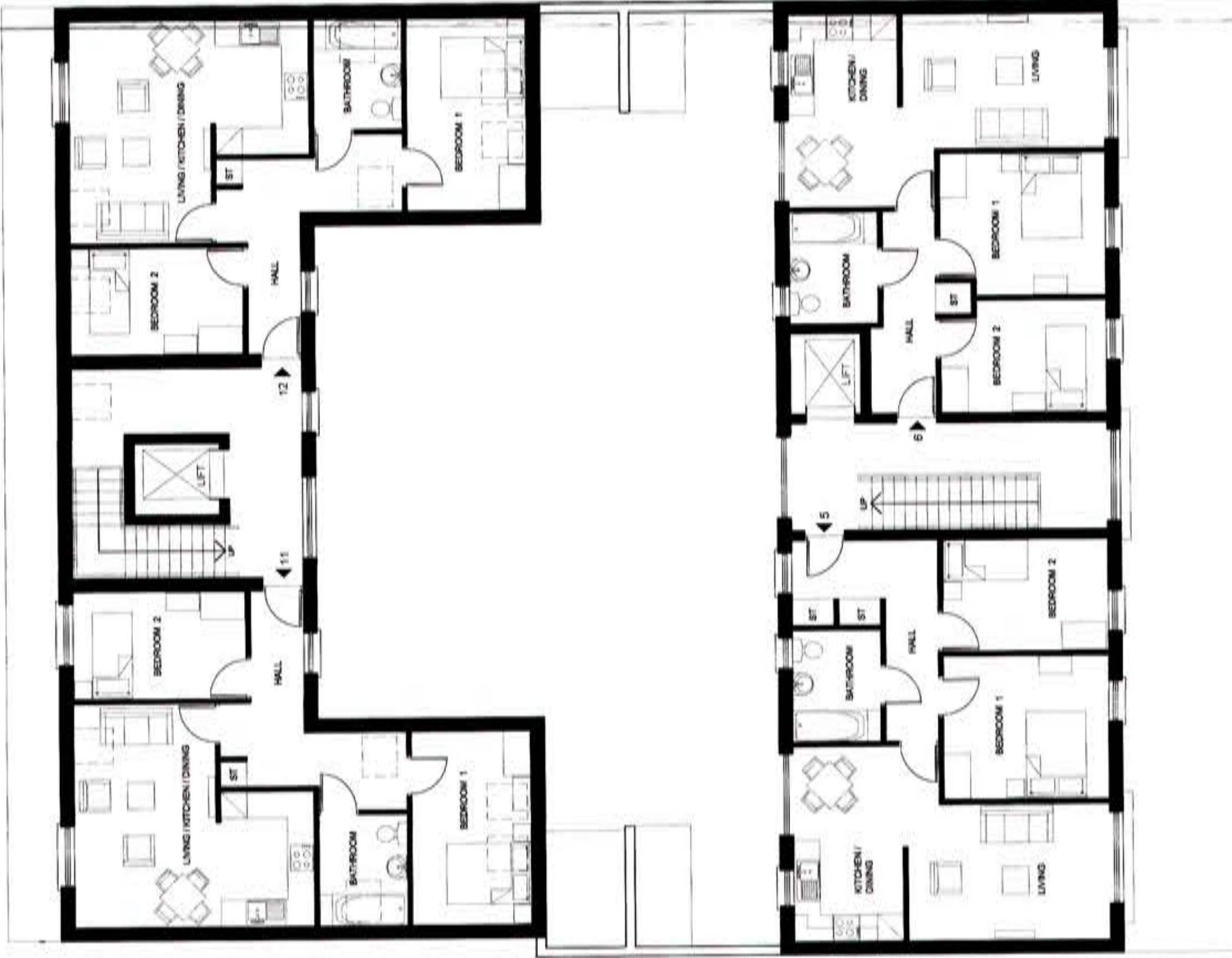
SOUTH FACING INTERNAL COURTYARD SECTIONAL ELEVATION - 1:100



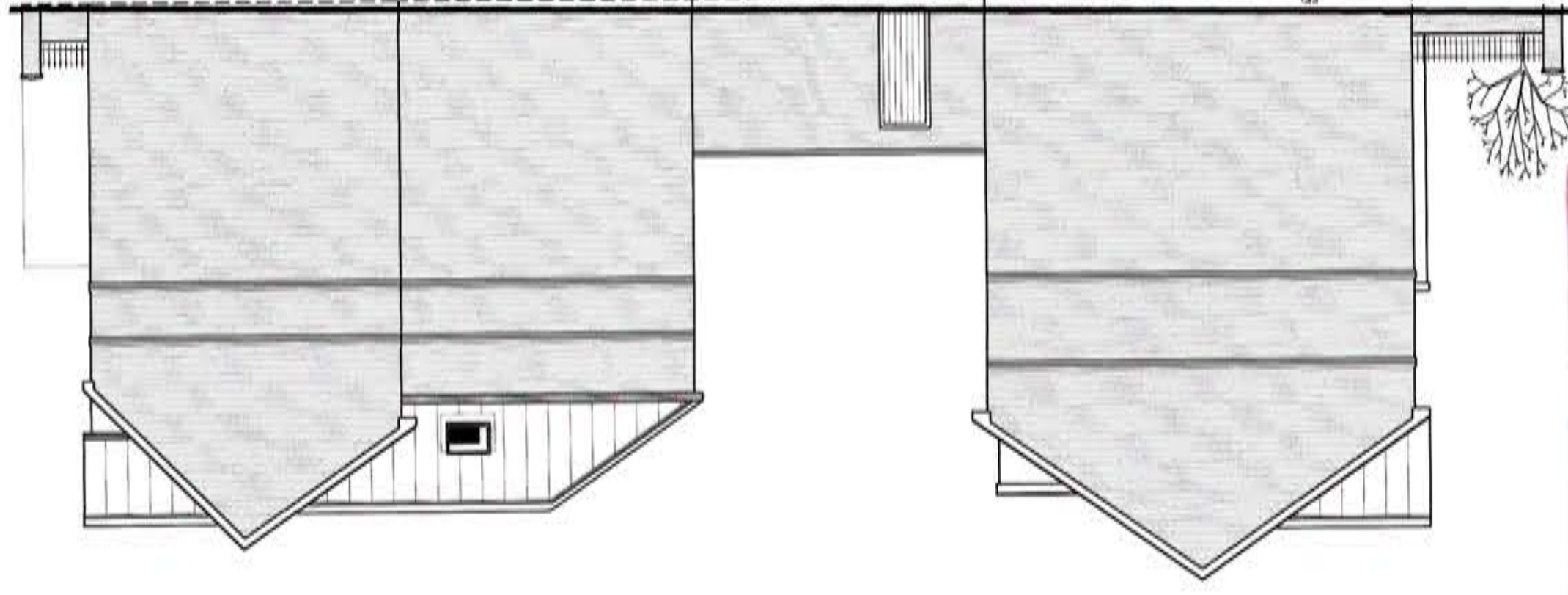
FIRST FLOOR PLAN - 1:100



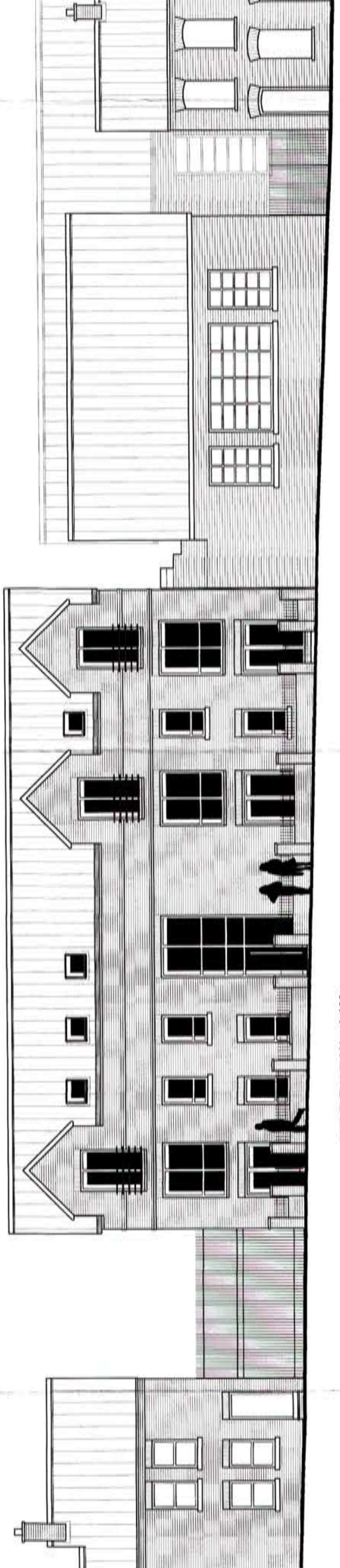
NORTH FACING INTERNAL COURTYARD SECTIONAL ELEVATION - 1:100



SECOND FLOOR PLAN - 1:100



WEST FACING GABLE ELEVATION - 1:100



HILLMAN STREET ELEVATION - 1:100

EXTERNAL FINISHES:
 REDLAND MINI STONEWOLD OR SIMILAR SLATE GREY ROOF TILES.
 STAINED TIMBER FASCIA, SOFFIT & BARGE BOARDS.
 BLACK UPVC COBE GUTTERING AND DOWNPIPES.
 TYRONE KNOTTON OR SIMILAR CLAY FACING BRICK WITH PROJECTING STRING COURSES AS SHOWN. STANDARD GREY MORTAR.
 SMOOTH RENDER WHERE SHOWN TO HAVE MASONRY PAINT FINISH.
 LIGHT OAK COLOURED UPVC WINDOWS, EXTERNAL DOORS.
 HARDWOOD ENTRANCE SCREEN STAINED TO MATCH WINDOWS.
 75mm DEEP PRECAST CONCRETE CILLS.
 RAILINGS TO BE GLOSS PAINTED GALVANISED STEEL.
 COURTYARD AREA TO BE PLANTED OUT WITH MIXED TREES & SHRUBS AS INDICATED.
 SECURE CYCLE STANDS TO BE PROVIDED.

Drawing Number 04

Area Planning Office
 RECEIVED
 16 SEP 2014
 File No. 630/FSD/06/A

Rev A Amended scheme as per discussions with Planning Service
 Rev 08

PROPOSED DEVELOPMENT
 SITE OF
 MACROBY MEMORIAL PRESBYTERIAN CHURCH
 DUNCAIRN GARDENS
 BELFAST BT15 2GN

PROPOSED UPPER FLOOR PLANS &
 ELEVATIONS
 1:100 Scale @ A1

M C LOGAN ARCHITECTS
 2 MOUNT MERRION AVENUE
 BELFAST BT9 6DF
 TEL: 028 90 228800

DWG. NO. 630/FSD/06/A